

Transmission Line Rebuild and Reroute Augusta to Winslow – Sections 1 & 40

Presentation to Winslow Neighbors
May 13, 2024

Update

Central Maine Power will be rebuilding a 23-mile transmission line from Augusta to Winslow beginning late 2024 to improve the reliability and resiliency on our electric delivery system to more than 7,700 customers.

While seeking approval for the rebuild from the Maine Public Utilities Commission (MPUC), a reroute onto another transmission line in Winslow was suggested and is under review.

We anticipate a MPUC decision in the near future.



Project Team

Mollie Jones

CMP Project Manager

Nicole Picard

CMP High Voltage Transmission Lines Unit Manager

Jenna Muzzy

Avangrid Director of Transmission Lines

David Bean

CMP Senior Designer, Transmission Projects

Curt Kinney

CMP Construction Manager

William Goggin

CMP Environmental Permitting Manager

Deborah Turcotte

CMP Project Outreach Specialist

Lauren Rodrigue

CMP Key Accounts Manager

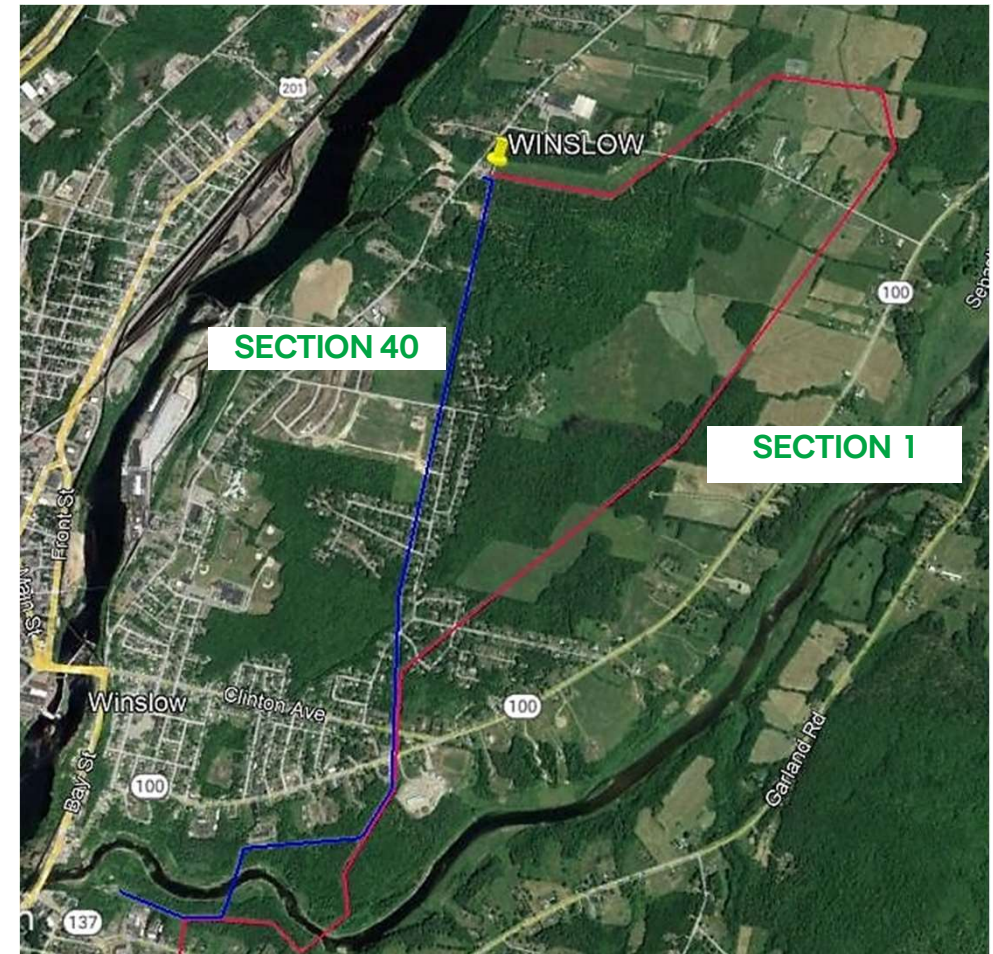
POWERengineers

Environmental Permitting Contractor

Transmission Lines in Winslow

Sections 1 & 40

- Section 1 serves approximately 7,735 people
- Both lines are 34,500-volt (34.5kV)
- Both originally built around 1920.
 - Section 1 is 23 miles long and travels from Augusta, Vassalboro, Winslow and a small part of Benton.
 - Section 40 is 3 miles long. Of that, 1.6 miles will be rebuilt if the Section 1 reroute is approved.
- Right-of-way is cross country and roads



Need to Upgrade Section 1 Transmission Line



Reroute begins at Smiley Road and Warren Terrace.
Single poles. Double circuited.

Current

- 93 structures failed visual inspection during Fall 2020 drone inspection
- Survey & structural analysis in 2021 found 307 out of 632 structures to be structurally inadequate
- Insufficient working clearances
- Aging conductors

New

- Full rebuild using light duty weathered brown steel poles and tree wire
- Wood poles in road rights-of-ways
- Average pole height of 60 feet
- The lines will still operate at 34.5kV

Proposed Route Change in Winslow: Analysis & Benefits

Reroute Analysis

Central Maine Power has proposed a reroute of a segment of Section 1 onto another existing 34.5kV line (Section 40)

- Section 1 and Section 40 transmission lines will double-circuit onto singular poles beginning in the corridor between Smiley Avenue and Warren Terrace, and travel approximately 1.6 miles.
- 2.7 miles of Section 1 would be eliminated, and the existing structures would be removed
- The new structures will be placed in line or at a slight offset from the current line.

Benefits

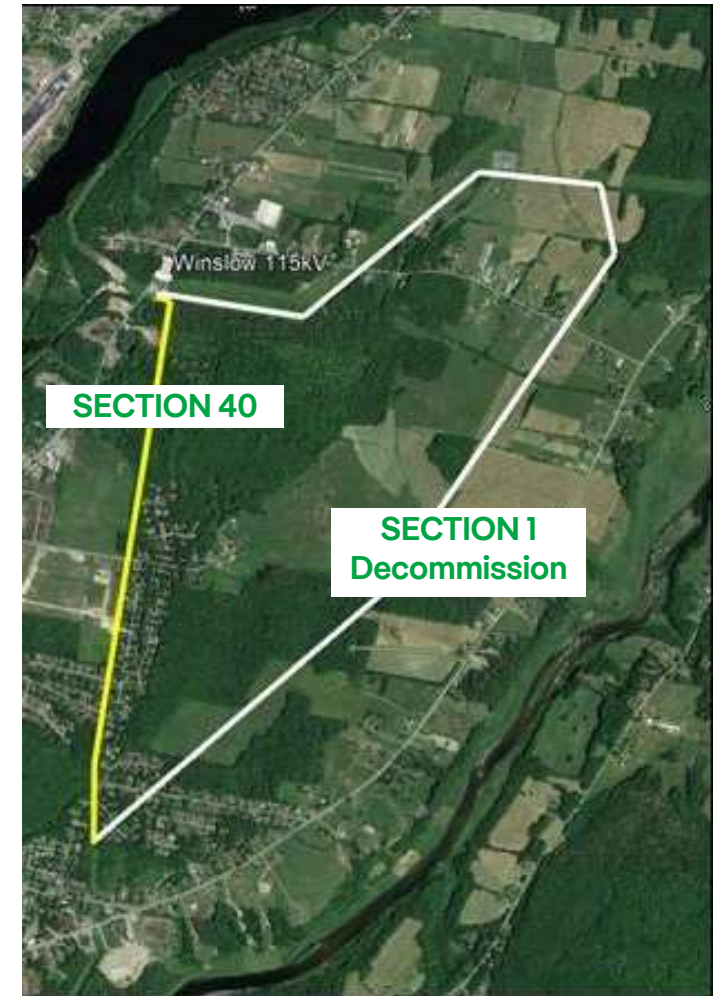
Improves reliability

Eliminates ~ 3 miles of t-line

Lessens impact on wetlands

Lengthens lifespan of line

Reduces project and lifetime maintenance costs



Proposed Route Change in Winslow: Schedule



Estimated Schedule

Section 1 start

- Early Spring 2025 at Augusta East Side Substation

Section 40 start*

- **If approved by the Maine Public Utilities Commission.*
- Late Summer 2025

Completion

- End of 2025



QUESTIONS.



CMP Project Outreach

1.888.267.0831

Outreach@cmpco.com